



GAMME DI PRODOTTO:

Riduttori coassiali
Variatori di velocità
Riduttori pendolari

RANGE OF PRODUCTS:

Helical gear reducers
Mechanical variator
Shaft-mounted gearbox

PRODUKTBEREICHE:

Stirnradgetriebe
Verstellgetriebe
Aufsteckgetriebe

GAMAS DE PRODUCTOS:

Reductores de engr. cilindricos
Variadores
Reductores pendulares



**RIDUTTORI PENDOLARI
SHAFT-MOUNTED GEARBOX
AUFSTECKGETRIEBE
REDUCTORES PENDULARES**

RFV

MADE IN ITALY

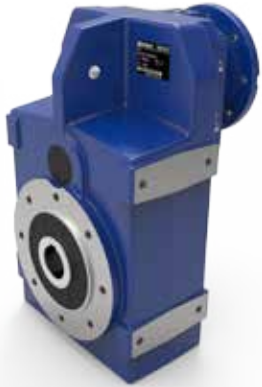
VÜÖF ÖÖÄÖ^däà^ÄÖ{ àP
Ü^}^~|ä^i•dæ^Äi
i i JH^Sæ@
V^|Bä i G EÜJI JI €
ÖæKä i G EÜJI JI HF
ä { O dæ ^8E^däà^Ä^
د د د Eæ ^8E^däà^Ä^

36016 THIENE (VI) - ITALY
Via dell'Industria, 13
Tel. +39 0445 368532
Fax +39 0445 370734
info@varmec.com
www.varmec.com

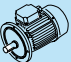
Designazione / Designation / Bezeichnung / Nomenclatura

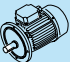
Riduttore Gearbox Getriebe Reductor	Grandezza Size Größe Tamaños	n° stadi n° reductions n° Unterstufungen n° reducedion	Forma costruttiva Constructive form Getriebe Ausführung Forma constructiva	Rapporto rid. Ratio Unteretzungsverhältnis Relación de reducción	Flangia uscita Output flange Abtriebsflansch Brida de salida	Tipo entrata Input type Antriebsart Tipo de entrada	Posizione di mont. Mounting position Baulage Posición de montaje	Opzione Option Option Option
RFV	35	3	H35	110.69	-	IEC 90 B5	H1	FL
RFV	25 35 40	2 3	H.. S R..	5.5 ÷ 442.65	F..	IEC.. NEMA.. FV	H1 (std) H2 H3 H4 H5 H6	FL

COMING SOON:
RFV 30.. RFV 50..



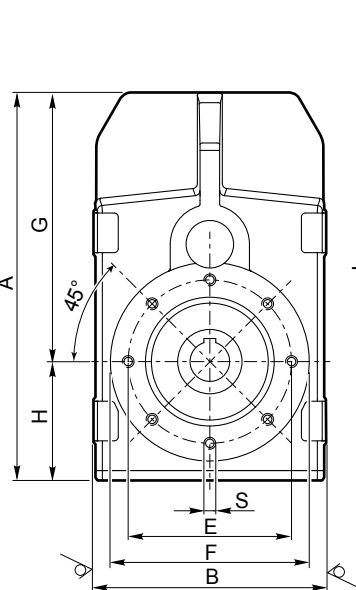
Dati tecnici / Technical data / Technische Daten / Datos técnicos

RFV	i	n ₁ = 1400 min ⁻¹				
		n ₂ min ⁻¹	Mn ₂ Nm	P ₁ kW	IEC B5	IEC B14
252	7.81	179.3	101	2.00	90-80-71-63	90-80-71
	9.33	150.1	109	1.80	90-80-71-63	90-80-71
	10.66	131.3	114	1.65	90-80-71-63	90-80-71
	12.36	113.3	119	1.49	90-80-71-63	90-80-71
	14.11	99.2	131	1.43	90-80-71-63	90-80-71
	16.85	83.1	140	1.28	90-80-71-63	90-80-71
	19.25	72.7	146	1.17	90-80-71-63	90-80-71
	20.17	69.4	151	1.16	90-80-71-63	90-80-71
	23.04	60.8	156	1.04	90-80-71-63	90-80-71
	25.63	54.6	167	1.01	90-80-71-63	90-80-71
	30.61	45.7	176	0.89	90-80-71-63	90-80-71
	34.96	40.0	183	0.81	90-80-71-63	90-80-71
	40.56	34.5	190	0.72	90-80-71-63	90-80-71
	45.12	31.0	200	0.68	90-80-71-63	90-80-71
	49.39	28.3	200	0.62	90-80-71-63	90-80-71
	53.89	26.0	200	0.57	90-80-71-63	90-80-71
	61.56	22.7	200	0.50	90-80-71-63	90-80-71
	71.42	19.6	200	0.43	90-80-71-63	90-80-71
	78.17	17.9	200	0.39	90-80-71-63	90-80-71
352	5.55	252.3	292	8.12	132-112-100-90-80-71	132-112-100-90-80-71
	6.45	217.1	322	7.70	132-112-100-90-80-71	132-112-100-90-80-71
	7.63	183.5	366	7.40	132-112-100-90-80-71	132-112-100-90-80-71
	9.23	151.7	419	7.01	132-112-100-90-80-71	132-112-100-90-80-71
	12.83	109.1	458	5.51	132-112-100-90-80-71	132-112-100-90-80-71
	14.91	93.9	513	5.31	132-112-100-90-80-71	132-112-100-90-80-71
	16.95	82.6	517	4.71	132-112-100-90-80-71	132-112-100-90-80-71
	19.69	71.1	575	4.51	132-112-100-90-80-71	132-112-100-90-80-71
	21.58	64.9	574	4.10	132-112-100-90-80-71	132-112-100-90-80-71
	23.29	60.1	604	4.00	132-112-100-90-80-71	132-112-100-90-80-71
	25.07	55.8	618	3.80	132-112-100-90-80-71	132-112-100-90-80-71
	29.64	47.2	692	3.60	132-112-100-90-80-71	132-112-100-90-80-71
	33.38	41.9	693	3.20	132-112-100-90-80-71	132-112-100-90-80-71
	35.88	39.0	698	3.00	132-112-100-90-80-71	132-112-100-90-80-71
	39.47	35.5	691	2.70	132-112-100-90-80-71	132-112-100-90-80-71
	41.24	33.9	562	2.10	112-100-90-80-71-63	112-100-90-80-71
	47.93	29.2	606	1.95	112-100-90-80-71-63	112-100-90-80-71
	56.66	24.7	661	1.80	112-100-90-80-71-63	112-100-90-80-71
	68.58	20.4	667	1.50	112-100-90-80-71-63	112-100-90-80-71
402	4.83	290.0	454	14.5	132-112-100-90-80-71	132-112-100-90
	5.58	250.9	507	14.0	132-112-100-90-80-71	132-112-100-90
	6.60	212.0	570	13.3	132-112-100-90-80-71	132-112-100-90
	7.63	183.4	619	12.5	132-112-100-90-80-71	132-112-100-90
	8.96	156.3	697	12.0	132-112-100-90-80-71	132-112-100-90
	10.72	130.6	765	11.0	132-112-100-90-80-71	132-112-100-90
	12.17	115.1	781	9.91	132-112-100-90-80-71	132-112-100-90
	14.06	99.6	866	9.51	132-112-100-90-80-71	132-112-100-90
	16.50	84.8	974	9.11	132-112-100-90-80-71	132-112-100-90
	19.75	70.9	1037	8.11	132-112-100-90-80-71	132-112-100-90
	22.60	62.0	1040	7.10	132-112-100-90-80-71	132-112-100-90
	26.12	53.6	1101	6.50	132-112-100-90-80-71	132-112-100-90
	30.64	45.7	1200	6.04	132-112-100-90-80-71	132-112-100-90
	34.52	40.6	1200	5.37	132-112-100-90-80-71	132-112-100-90
	40.50	34.6	1200	4.57	132-112-100-90-80-71	132-112-100-90
	48.48	28.9	1200	3.82	132-112-100-90-80-71	132-112-100-90
	57.20	24.5	1200	3.24	112-100-90-80-71	112-100-90
	68.47	20.4	1200	2.70	112-100-90-80-71	112-100-90

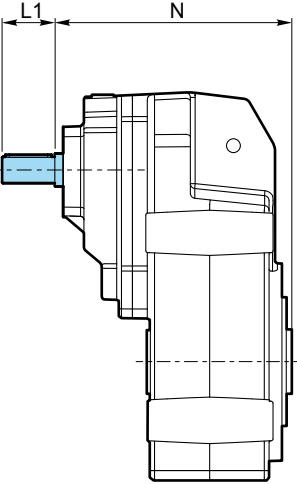
RFV	i	n ₁ = 1400 min ⁻¹				
		n ₂ min ⁻¹	Mn ₂ Nm	P ₁ kW	IEC B5	IEC B14
253	79.92	17.5	200	0.39	71-63-56	71-63-56
	92.72	15.1	200	0.34	71-63-56	71-63-56
	98.47	14.2	200	0.32	71-63-56	71-63-56
	117.60	11.9	200	0.27	71-63-56	71-63-56
	134.34	10.4	200	0.23	71-63-56	71-63-56
	155.85	9.0	200	0.20	71-63-56	71-63-56
	170.87	8.2	200	0.18	71-63-56	71-63-56
	204.06	6.9	200	0.15	71-63-56	71-63-56
	233.10	6.0	200	0.14	71-63-56	71-63-56
	250.99	5.6	200	0.13	71-63-56	71-63-56
	270.43	5.2	200	0.12	71-63-56	71-63-56
	286.71	4.9	200	0.11	71-63-56	71-63-56
	332.63	4.2	200	0.09	71-63-56	71-63-56
353	71.90	19.5	614	1.35	90-80-71-63	90-80-71
	85.01	16.5	645	1.20	90-80-71-63	90-80-71
	95.25	14.7	602	1.00	90-80-71-63	90-80-71
	102.89	13.6	650	1.00	90-80-71-63	90-80-71
	110.69	12.6	665	0.95	90-80-71-63	90-80-71
	122.04	11.5	694	0.90	90-80-71-63	90-80-71
	130.87	10.7	700	0.84	90-80-71-63	90-80-71
	147.71	9.5	700	0.75	90-80-71-63	90-80-71
	158.39	8.8	700	0.70	90-80-71-63	90-80-71
	184.22	7.6	600	0.51	90-80-71-63	90-80-71
	214.07	6.5	623	0.46	90-80-71-63	90-80-71
	253.10	5.5	640	0.40	90-80-71-63	90-80-71
	306.32	4.6	678	0.35	90-80-71-63	90-80-71
	365.74	3.8	694	0.30	90-80-71-63	90-80-71
	442.65	3.2	700	0.25	90-80-71-63	90-80-71
403	74.67	18.7	1200	2.53	90-80-71	90-80-71
	86.31	16.2	1200	2.19	90-80-71	90-80-71
	101.27	13.8	1200	1.87	90-80-71	90-80-71
	108.91	12.9	1200	1.74	90-80-71	90-80-71
	125.89	11.1	1200	1.50	90-80-71	90-80-71
	138.65	10.1	1200	1.36	90-80-71	90-80-71
	147.71	9.5	1200	1.28	90-80-71	90-80-71
	160.26	8.7	1200	1.18	90-80-71	90-80-71
	170.24	8.2	1200	1.11	90-80-71	90-80-71
	188.04	7.4	1200	1.01	90-80-71	90-80-71
	203.77	6.9	1200	0.93	90-80-71	90-80-71
	213.38	6.6	1200	0.89	90-80-71	90-80-71
	250.36	5.6	1200	0.76	90-80-71	90-80-71
	265.04	5.3	1200	0.71	90-80-71-63	90-80-71
	306.34	4.6	1200	0.62	90-80-71-63	90-80-71
	359.44	3.9	1200	0.53	90-80-71-63	90-80-71
	430.24	3.3	1200	0.44	90-80-71-63	90-80-71

Dimensioni / Dimensions / Abmessungen / Dimensiones

RFV...H...IEC



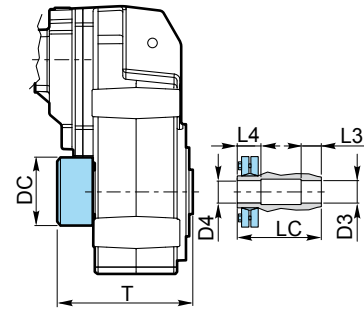
RFV...H...FV



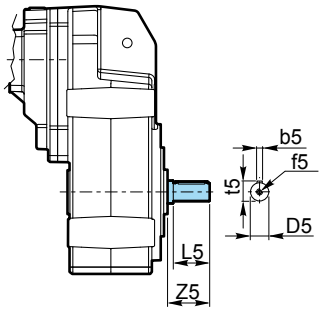
RFV	A	B	C h7	E	F	G	H	I	M	N	O	P	Q	R	b2	D2 h7	L2	t2	b1	D1 h6	f1	L1	N	t1
252	255	170	80	100	120	175	80	118	170.5	140	11	4.5	3	35	8	25	100.5	28.3	6	19	M6	40	165.3	21.5
253								144	164						8	30		33.3	5	16	M6	40	162.3	18
352	333	210	110	130	150	233	100	152	217 (IEC 63-71-80-90)	234.5 (IEC 100/112)	265 (IEC 132)	170	13	6.5	54	10	35	38.3	8	24	M8	50	229.8	27
353								180	229.5						12	40	125	43.3	6	19	M6	40	208.1	21.5
402	387	242	130	165	200	272	115	191.5	251.3 (IEC 71-80-90-100-112)	282.5 (IEC 132)		218	14	7.5	56.5	12	40	43.3	8	28	M10	60	262.6	31
403								223.5	252.5						14	45	144	48.8	8	24	M8	50	246.5	27
															6	19			6	19	M6	40	245.8	21.5

Forma costruttiva / Constructive forma / Getriebe Ausführung / Forma constructiva

RFV...S



RFV...R...



RFV	DC	D3 G7	D4 H7	LC	L3	L4	T	b5	D5 h6	f5	L5	t5	Z5
252	77	27	25	140	36	34	160	8	25	M8	45	28	76.5
253													
352	90	38	36	157	42	42	180	10	35	M10	60	38	93
353													
402	100	44	42	179	48.5	48.5	200	12	40	M12	80	43	112.5
403													

Opzione / Option / Option / Option

RFV...FL

